

# Energy Management Network Software for Energy Management Type OPC Server for Eos-Array and Energy Meters



- OPC (TM) Server application
- OPC-DA (Data Access) specification release 2.04 compliant
- Real time data and alarms management for Eos-Array and Eos-Array Lite
- Real time data management for EM21,EM24,EM26,WM5,WM30,WM40
- Data acquisition from RS485 and Ethernet based networks (MODBUS/RTU, MODBUS/TCP)
- Plug'n play configuration of Carlo Gavazzi's connected devices
- Multiple connections manageable by a single server
- Easy and reliable data exchange with OPC clients from different suppliers

## Product description

OPC Server for Eos-Array and Energy meters is a software for Windows XP,Vista,7 developed to interface by means of the MODBUS protocol (RTU and TCP) the Eos-Array products and Energy meters such as EM21, EM24, EM26, WM5, WM30, WM40.

The software enables the user to manage real time data from the electrical or photovoltaic

installation using the OPC Client of choice (among a large selection of third party software like SCADAs, data historians and data management tools). OPC is an international industrial standard for an easy and reliable data exchange between products and application from different suppliers.

## How to order

OPCSERVERXX

Item Code \_\_\_\_\_

## General Specifications

### Requirements

#### Hardware:

- 256 MB RAM (512 MB suggested for .NET Framework)
- Minimum 15 MB of hard disk space for program installation
- Minimum 10 MB of hard disk space for log files
- Ethernet board compatible with Windows if TCP/UDP networks are used
- RS485 board compatible with Windows if serial networks are used

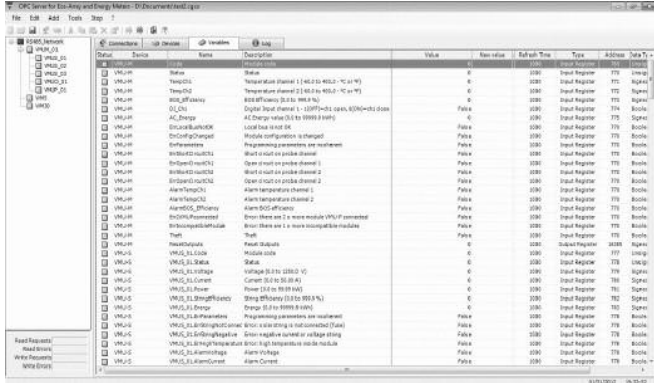
#### Software:

- Windows XP (SP3) + Microsoft .NET Framework 2.0
- Windows Vista + Microsoft .NET Framework 2.0
- Windows 7 + Microsoft .NET Framework 2.0



## General Specifications (cont.)

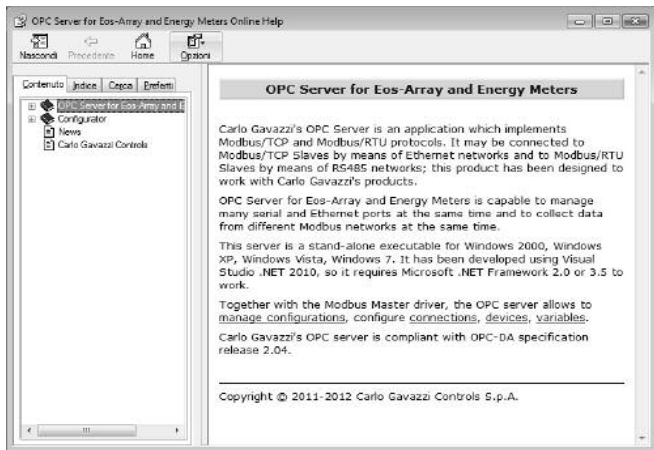
### Easy to use graphical user interface



- Hierarchical tree for connections, devices, variables
- Immediate status recognition based on different colors
- Plug'n play devices configuration for RS485 networks
- Up to 10 connections managed by the same server <sup>(1)</sup>
- Up to 32 devices under the same connections <sup>(1)</sup>
- Integrated drivers for Carlo Gavazzi's EosArray and Energy Meters (no need to manually configure them)

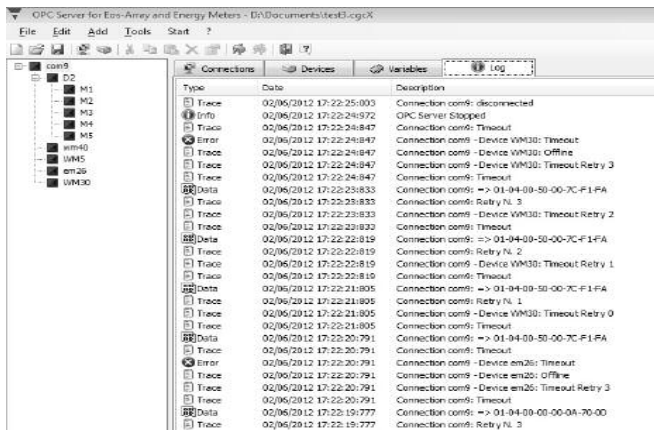
**Note:** <sup>(1)</sup> The actual limits depend on the network status and configuration (e.g. baudrate for RS485 and congestion rate for Ethernet)

### Multi-language Online Help



- User interface and online help available in 6 languages (Italian, English, German, Spanish, French, Danish)

### Integrated tracing feature



OPC Server's activity tracing for an easy debugging in the case of network problems