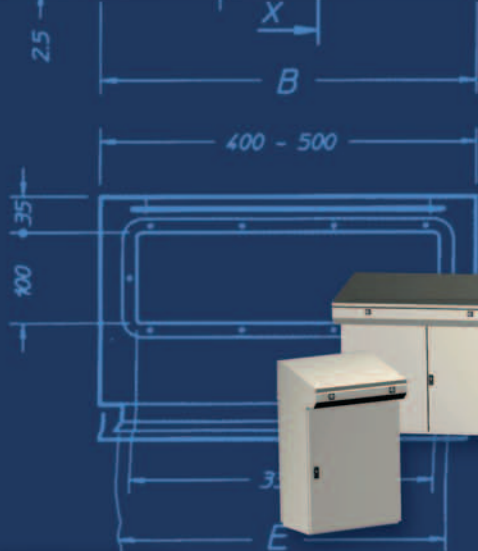


Enclosure Overview

- Enclosures
- Junction Boxes
- Modular Cabinets
- PC and Rack Enclosures
- Freestanding Consoles
- Stainless Steel Solutions
- Specialty Products




OUR AUTOMATED MANUFACTURING FACILITIES ARE THE FOUNDATION TO OUR SUCCESS!

We manufacture our enclosures and cabinets using customized systems and CNC machinery. The loading of raw sheet metal takes place in our central warehouse, then for production, painting and assembly processes, it is carried throughout our state-of-the-art facilities, providing the means to program and organize the working cycle utilizing lean manufacturing concepts. Throughout their production cycle, the enclosures and cabinets undergo the following sheet metal machining stages:

Cutting and Punching

After observing stringent quality control procedures, the sheet metal foils are lifted by an automatic stocking system and fed to the CNC machines, where they are cut and punched according to the programmed working cycle.



The sheet metal coming from the automated storage bay is conveyed to the first machining sections: punching and cutting.

Folding

After cutting and punching the sheet metal for the final product, the folding stage is then started. Different robotic devices are programmed for different processes, thus optimizing the time/performance ratio and allowing skilled operators to focus on the critical cycle control tasks. In some machining stages, *especially for smaller details*, servo driven processes are used and monitored by the machine operators.

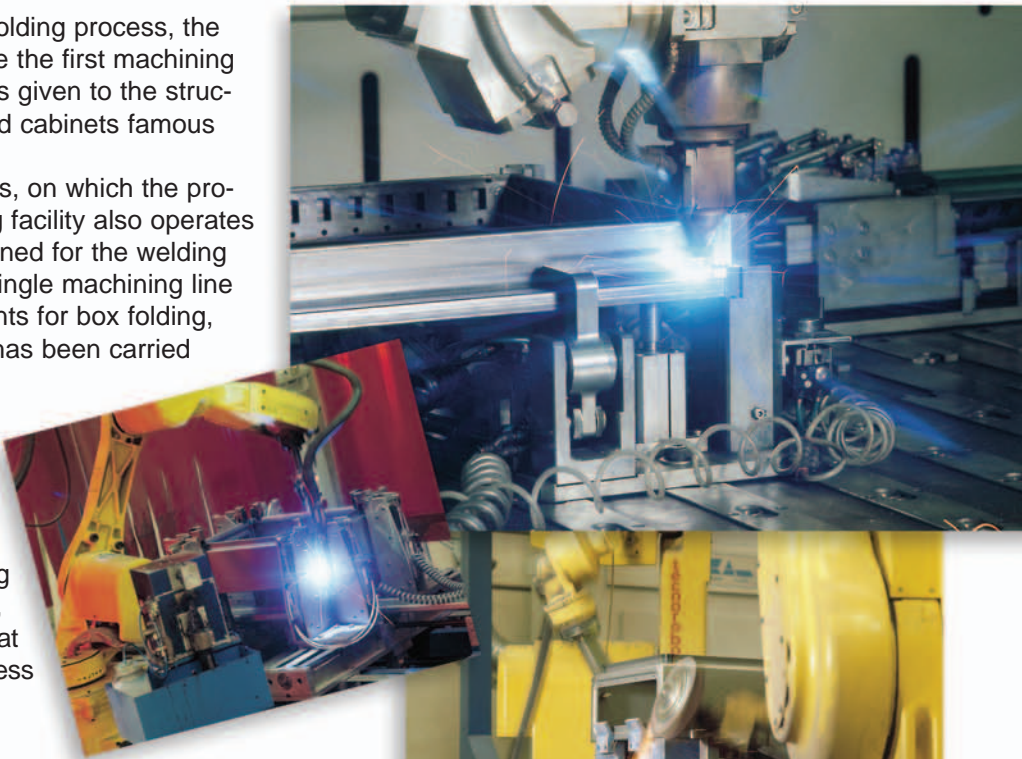


The folding facility employs advanced kinematic systems.

Welding Upon conclusion of the folding process, the material proceeds to welding, to complete the first machining stages. This is where a definitive shape is given to the structures that have made ETA enclosures and cabinets famous worldwide.

Besides the lean manufacturing work cells, on which the production cycle is based, the manufacturing facility also operates a special plant that was specifically designed for the welding of enclosures and junction boxes. One single machining line incorporates two sequentially located plants for box folding, welding and grinding. Once the process has been carried out, the raw product is ready for painting.

For the welding of our larger cabinets, automated machining stages are conducted at our laser welding plant, which is a leading innovation among control panel manufacturers. We were the first enclosure company to employ laser welding to mount the sintered steel orthogonal joint, which is an exclusive design component that is the cornerstone that has driven the success of our ARETA cabinets.



Painting

Once all preparation processes are completed, the structures proceed to the painting stage. Four progressive stages - cleaning, washing, rinsing and drying - remove all traces of dirt from the metal components. Then robotic devices deposit powder with a polyester resin base, carboxylated with epoxy resins, through electrostatic application. Oven polymerization concludes the painting cycle.



Finishing and Assembly

Painted products then move on to the next stage, where panels are subjected to gumming and placed onto the assembly lines. The machine operators then outfit them with internal and outer components, and prepare them for packaging. Once packaged, the finished products are sent to our centralized warehouse.



ETA metal structures require optimal finishing and packaging by our highly skilled machine operators.



ST Enclosures with Door

- Boxes for wall mounting
- EMC and stainless steel available (see pages 9&10)
- Mounting plate included
- Wall mounting brackets: SDWC-010
- Protection degree: NEMA 4/12 and IP65

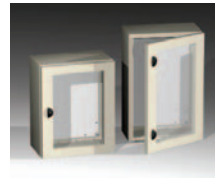
DIMENSIONS		MODEL NUMBER
In mm W x H x D	Approx. inches W x H x D	
200 x 300 x 150	8" x 12" x 6"	ST2-315
300 x 300 x 150	12" x 12" x 6"	ST3-315
300 x 400 x 150	12" x 16" x 6"	ST3-415
300 x 500 x 150	12" x 20" x 6"	ST3-515
400 x 300 x 150	16" x 12" x 6"	ST4-315
400 x 500 x 150	16" x 20" x 6"	ST4-515
300 x 400 x 200	12" x 16" x 8"	ST3-420
300 x 500 x 200	12" x 20" x 8"	ST3-520
400 x 300 x 200	16" x 12" x 8"	ST4-320
400 x 400 x 200	16" x 16" x 8"	ST4-420
400 x 500 x 200	16" x 20" x 8"	ST4-520
400 x 600 x 200	16" x 24" x 8"	ST4-620
500 x 500 x 200	20" x 20" x 8"	ST5-520
500 x 700 x 200	20" x 28" x 8"	ST5-720
600 x 400 x 200	24" x 16" x 8"	ST6-420
600 x 600 x 200	24" x 24" x 8"	ST6-620
600 x 800 x 200	24" x 32" x 8"	ST6-820
400 x 500 x 250	16" x 20" x 10"	ST4-525
400 x 600 x 250	16" x 24" x 10"	ST4-625
500 x 700 x 250	20" x 28" x 10"	ST5-725
600 x 800 x 250	24" x 32" x 10"	ST6-825
600 x 1000 x 250	24" x 40" x 10"	ST6-1025
600 x 400 x 300	24" x 16" x 12"	ST6-430
600 x 600 x 300	24" x 24" x 12"	ST6-630
600 x 800 x 300	24" x 32" x 12"	ST6-830
600 x 1000 x 300	24" x 40" x 12"	ST6-1030
600 x 1200 x 300	24" x 47" x 12"	ST6-1230
600 x 1400 x 300	24" x 55" x 12"	ST6-1430
800 x 800 x 300	32" x 32" x 12"	ST8-830
800 x 1000 x 300	32" x 40" x 12"	ST8-1030
800 x 1200 x 300	32" x 47" x 12"	ST8-1230
800 x 1400 x 300	32" x 55" x 12"	ST8-1330
400 x 600 x 400	16" x 24" x 16"	ST4-640
600 x 600 x 400	24" x 24" x 16"	ST6-640
600 x 800 x 400	24" x 32" x 16"	ST6-840
600 x 1000 x 400	24" x 40" x 16"	ST6-1040
800 x 800 x 400	32" x 32" x 16"	ST8-840
800 x 1000 x 400	32" x 40" x 16"	ST8-1040



ST Enclosures with Double Door

- Boxes for wall mounting
- Mounting plate included
- Wall mounting brackets: SDWC-010
- Protection degree: NEMA 12 and IP55

DIMENSIONS		MODEL NUMBER
In mm W x H x D	Approx. inches W x H x D	
1000 x 800 x 200	40" x 32" x 8"	ST10-820
800 x 600 x 300	32" x 24" x 12"	ST8-630
1000 x 800 x 300	40" x 32" x 12"	ST10-830
1000 x 1000 x 300	40" x 40" x 12"	ST10-1030
1000 x 1200 x 300	40" x 47" x 12"	ST10-1230
1000 x 1400 x 300	40" x 55" x 12"	ST10-1430
1200 x 1200 x 300	47" x 47" x 12"	ST12-1430

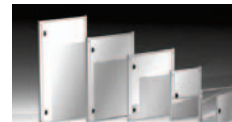


STP Enclosures with Window Door

- Boxes for wall mounting
- Mounting plate included
- Wall mounting brackets: SDWC-010
- Protection degree: NEMA 12 and IP55

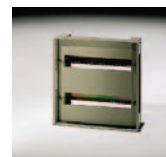
DIMENSIONS		MODEL NUMBER
In mm W x H x D	Approx. inches W x H x D	
400 x 300 x 200	16" x 12" x 8"	STP4-320
400 x 400 x 200	16" x 16" x 8"	STP4-420
400 x 500 x 200	16" x 20" x 8"	STP4-520
400 x 600 x 200	16" x 24" x 8"	STP4-620
500 x 700 x 200	20" x 28" x 8"	STP5-720
600 x 400 x 200	24" x 16" x 8"	STP6-420
600 x 600 x 200	24" x 24" x 8"	STP6-620
400 x 500 x 250	16" x 20" x 10"	STP4-525
400 x 600 x 250	16" x 24" x 10"	STP4-625
500 x 700 x 250	20" x 28" x 10"	STP5-725
600 x 800 x 250	24" x 32" x 10"	STP6-825
600 x 1000 x 250	24" x 40" x 10"	STP6-1025
600 x 400 x 300	24" x 16" x 12"	STP6-430
600 x 600 x 300	24" x 24" x 12"	STP6-630
600 x 800 x 300	24" x 32" x 12"	STP6-830
600 x 1000 x 300	24" x 40" x 12"	STP6-1030
600 x 1200 x 300	24" x 47" x 12"	STP6-1230
800 x 1000 x 300	32" x 40" x 12"	STP8-1030
800 x 1200 x 300	32" x 47" x 12"	STP8-1230

Accessories for Enclosures



Inner Door

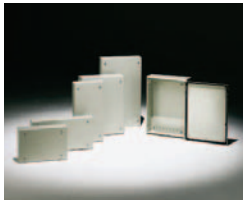
FOR BOX TYPE	MODEL NUMBER
ST4/STP4-520/525	STP01-45
ST4/STP4-620/625	STP01-46
ST5/STP5-720/725	STP01-57
ST6/STP6-420/430	STP01-64
ST6/STP6-825/830	STP01-68
ST6/STP6-1025/1030	STP01-610
ST6/STP6-1230	STP01-612
ST8/STP8-1030	STP01-810
ST8/STP8-1230	STP01-812



Modular Kit

FOR BOX TYPE	MODEL NUMBER
ST4/STP4-320	MDST4-300
ST4/STP4-420	MDST4-400
ST4/STP4-520/525	MDST4-500
ST4/STP4-620/625	MDST4-600
ST6/STP6-620/630	MDST6-600
ST6/STP6-825/830	MDST6-800
ST6/STP6-1025/1030	MDST6-1000
ST6/STP6-1230	MDST6-1200

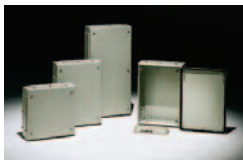
MDST4-200 Blank panel on request (available only for MDST4-600)
MDST6-200 Blank panel available on request



SDV Junction Boxes

- Cover fixed with captive screws
- EMC and Stainless Steel available (see pages 9&10)
- Mounting plate and wall mounting brackets to be ordered separately
- Protection degree: IP65

DIMENSIONS		MODEL NUMBER
In mm W x H x D	Approx. inches W x H x D	
150 x 150 x 80	6" x 6" x 3"	SDV1-108
200 x 200 x 80	8" x 8" x 3"	SDV2-208
300 x 200 x 80	12" x 8" x 3"	SDV3-208
400 x 200 x 80	16" x 8" x 3"	SDV4-208
500 x 200 x 80	20" x 8" x 3"	SDV5-208
600 x 200 x 80	24" x 8" x 3"	SDV6-208
800 x 200 x 80	32" x 8" x 3"	SDV8-208
150 x 150 x 120	6" x 6" x 5"	SDV1-112
200 x 200 x 120	8" x 8" x 5"	SDV2-212
300 x 150 x 120	12" x 6" x 5"	SDV3-112
300 x 200 x 120	12" x 8" x 5"	SDV3-212
300 x 300 x 120	12" x 12" x 5"	SDV3-312
400 x 200 x 120	16" x 8" x 5"	SDV4-212
400 x 300 x 120	16" x 12" x 5"	SDV4-312
400 x 400 x 120	16" x 16" x 5"	SDV4-412
500 x 200 x 120	20" x 8" x 5"	SDV5-212
500 x 300 x 120	20" x 12" x 5"	SDV5-312
600 x 200 x 120	24" x 8" x 5"	SDV6-212
600 x 300 x 120	24" x 12" x 5"	SDV6-312
600 x 400 x 120	24" x 16" x 5"	SDV6-412
800 x 200 x 120	32" x 8" x 5"	SDV8-212
800 x 400 x 120	32" x 16" x 5"	SDV8-412



SDF Junction Boxes with Gland Plates

- Cover fixed with captive screws
- Mounting plate and wall mounting brackets to be ordered separately
- Protection degree: IP55

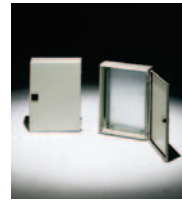
DIMENSIONS		MODEL NUMBER
In mm W x H x D	Approx. inches W x H x D	
300 x 200 x 120	12" x 8" x 5"	SDF3-212
300 x 300 x 120	12" x 12" x 5"	SDF3-312
400 x 200 x 120	16" x 8" x 5"	SDF4-212
400 x 300 x 120	16" x 12" x 5"	SDF4-312
400 x 400 x 120	16" x 16" x 5"	SDF4-412
500 x 200 x 120	20" x 8" x 5"	SDF5-212
500 x 300 x 120	20" x 12" x 5"	SDF5-312
600 x 200 x 120	24" x 8" x 5"	SDF6-212
600 x 300 x 120	24" x 12" x 5"	SDF6-312
600 x 400 x 120	24" x 16" x 5"	SDF6-412
800 x 200 x 120	32" x 8" x 5"	SDF8-212
800 x 400 x 120	32" x 16" x 5"	SDF8-412

SDVX Junction Boxes With Window Door

- Hinged door with captive screws
- Mounting plate and wall mounting brackets to be ordered separately
- Protection degree: IP55



DIMENSIONS		MODEL NUMBER
mm W x H x D	Approx. inches W x H x D	
400 x 200 x 120	16" x 8" x 5"	SDVX4-212
600 x 200 x 120	24" x 8" x 5"	SDVX6-212



SDP Junction Boxes with Door

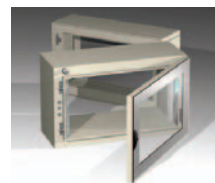
- Mounting plate and wall mounting brackets SDWC-010 to be ordered separately.
- Protection degree: IP55

DIMENSIONS		MODEL NUMBER
In mm W x H x D	Approx. inches W x H x D	
200 x 200 x 80	8" x 8" x 3"	SDP2-208
200 x 300 x 80	8" x 12" x 3"	SDP2-308
200 x 400 x 80	8" x 16" x 3"	SDP2-408
200 x 200 x 120	8" x 8" x 5"	SDP2-212
200 x 300 x 120	8" x 12" x 5"	SDP2-312
200 x 400 x 120	8" x 16" x 5"	SDP2-412
200 x 500 x 120	8" x 20" x 5"	SDP2-512
300 x 300 x 120	12" x 12" x 5"	SDP3-312
300 x 400 x 120	12" x 16" x 5"	SDP3-412



Mounting Plate for SDPA Junction Boxes

DIMENSIONS		MODEL NUMBER
In mm W x H x D	Approx. inches W x H x D	
150 x 150 x 2	6" x 6" x 0.08"	SDPA-11
200 x 200 x 2	8" x 8" x 0.08"	SDPA-22
300 x 150 x 2	12" x 6" x 0.08"	SDPA-31
300 x 200 x 2	12" x 8" x 0.08"	SDPA-32
300 x 300 x 2	12" x 12" x 0.08"	SDPA-33
400 x 200 x 2	16" x 8" x 0.08"	SDPA-42
400 x 300 x 2	16" x 12" x 0.08"	SDPA-43
400 x 400 x 2	16" x 16" x 0.08"	SDPA-44
500 x 200 x 2	20" x 8" x 0.08"	SDPA-52
500 x 300 x 2	20" x 12" x 0.08"	SDPA-53
600 x 200 x 2	24" x 8" x 0.08"	SDPA-62
600 x 300 x 2	24" x 12" x 0.08"	SDPA-63
600 x 400 x 2	24" x 16" x 0.08"	SDPA-64
800 x 200 x 2	32" x 8" x 0.08"	SDPA-82
800 x 400 x 2	32" x 16" x 0.08"	SDPA-84



CR Double Hinged 19" Rack Enclosures

- Double-hinged enclosure eases installation
- Mounting plate included
- Wall mounting brackets: SDWC-010
- Protection degree: NEMA 12 and IP55

DIMENSIONS			MODEL NUMBER
In mm W x H x D	Approx. inches W x H x D	Number of Units	
600 x 226 x 450	24" x 9" x 18"	3	CR03-45
600 x 359 x 450	24" x 14" x 18"	6	CR06-45
600 x 492 x 450	24" x 20" x 18"	9	CR09-45
600 x 626 x 450	24" x 25" x 18"	12	CR12-45
600 x 759 x 450	24" x 30" x 18"	15	CR15-45
600 x 892 x 450	24" x 35" x 18"	18	CR18-45
600 x 1026 x 450	24" x 40" x 18"	21	CR21-45
600 x 226 x 550	24" x 9" x 22"	3	CR03-55
600 x 359 x 550	24" x 14" x 22"	6	CR06-55
600 x 492 x 550	24" x 20" x 22"	9	CR09-55
600 x 626 x 550	24" x 25" x 22"	12	CR12-55
600 x 759 x 550	24" x 30" x 22"	15	CR15-55
600 x 892 x 550	24" x 35" x 22"	18	CR18-55
600 x 1026 x 550	24" x 40" x 22"	21	CR21-55

MODULAR ARETA CABINETS



ARETA Suite Cabinets

- Available as a ready to assemble 'flat pack' or fully assembled
- EMC and Stainless Steel available (see pages 9&10)
- Mounting plate to be ordered separately
- Protection degree: NEMA 12 and IP55

Accessories:

- Inner door - ATPI
- Side panels - ATFI
- 100mm high plinth - ATZ1
- Side inserted mounting plate - ATPL
- Front inserted mounting plate - ATPA (mounting accessories WTKB-002 to be ordered separately)
- Joining kit - ATKU
- Lifting eyebolts - WTGS



DIMENSIONS

DIMENSIONS	
In mm W x H x D	Approx. inches W x H x D
400 x 1600 x 400	16" x 63" x 16"
400 x 1800 x 400	16" x 71" x 16"
600 x 1400 x 400	24" x 55" x 16"
600 x 1600 x 400	24" x 63" x 16"
600 x 1800 x 400	24" x 71" x 16"
600 x 2000 x 400	24" x 79" x 16"
800 x 1400 x 400	32" x 55" x 16"
800 x 1600 x 400	32" x 63" x 16"
800 x 1800 x 400	32" x 71" x 16"
800 x 2000 x 400	32" x 79" x 16"
1000 x 1600 x 400	40" x 63" x 16"
1000 x 1800 x 400	40" x 71" x 16"
1000 x 2000 x 400	40" x 79" x 16"
1200 x 1400 x 400	47" x 56" x 16"
1200 x 1600 x 400	47" x 63" x 16"
1200 x 1800 x 400	47" x 71" x 16"
1200 x 2000 x 400	47" x 79" x 16"
1400 x 2000 x 400	55" x 79" x 16"
1600 x 1400 x 400	63" x 55" x 16"
1600 x 2000 x 400	63" x 79" x 16"
400 x 1600 x 500	16" x 63" x 20"
400 x 1800 x 500	16" x 71" x 20"
400 x 2000 x 500	16" x 79" x 20"
400 x 2200 x 500	16" x 87" x 20"
600 x 1400 x 500	24" x 55" x 20"
600 x 1600 x 500	24" x 63" x 20"
600 x 1800 x 500	24" x 71" x 20"
600 x 2000 x 500	24" x 79" x 20"
600 x 2200 x 500	24" x 87" x 20"
800 x 1400 x 500	32" x 55" x 20"
800 x 1600 x 500	32" x 63" x 20"
800 x 2000 x 500	32" x 79" x 20"
800 x 1800 x 500	32" x 71" x 20"
1000 x 1600 x 500	40" x 63" x 20"
800 x 2200 x 500	32" x 87" x 20"
1000 x 1800 x 500	40" x 71" x 20"
1000 x 2000 x 500	40" x 79" x 20"
1000 x 2200 x 500	40" x 87" x 20"
1200 x 1400 x 500	47" x 56" x 20"
1200 x 1600 x 500	47" x 63" x 20"
1200 x 1800 x 500	47" x 71" x 20"
1200 x 2000 x 500	47" x 79" x 20"
1200 x 2200 x 500	47" x 87" x 20"
1400 x 2000 x 500	55" x 79" x 20"
1600 x 1400 x 500	63" x 55" x 20"
1600 x 2000 x 500	63" x 79" x 20"

DIMENSIONS	
In mm W x H x D	Approx. inches W x H x D
400 x 1600 x 600	16" x 63" x 24"
400 x 1800 x 600	16" x 71" x 24"
400 x 2000 x 600	16" x 79" x 24"
400 x 2200 x 600	16" x 87" x 24"
600 x 1600 x 600	24" x 63" x 24"
600 x 1800 x 600	24" x 71" x 24"
600 x 2000 x 600	24" x 79" x 24"
800 x 1600 x 600	32" x 63" x 24"
800 x 1800 x 600	32" x 71" x 24"
800 x 2000 x 600	32" x 79" x 24"
800 x 2200 x 600	32" x 87" x 24"
1000 x 1600 x 600	40" x 63" x 24"
1200 x 1600 x 600	47" x 63" x 24"
1200 x 1800 x 600	47" x 71" x 24"
1200 x 2000 x 600	47" x 79" x 24"
1000 x 1800 x 600	40" x 71" x 24"
1000 x 2000 x 600	40" x 79" x 24"
1000 x 2200 x 600	40" x 87" x 24"
600 x 2200 x 600	24" x 87" x 24"
1200 x 2200 x 600	47" x 87" x 24"
1400 x 2000 x 600	55" x 79" x 24"
1600 x 2000 x 600	63" x 79" x 24"
400 x 1800 x 800	16" x 71" x 32"
400 x 2000 x 800	16" x 79" x 32"
400 x 2200 x 800	16" x 87" x 32"
600 x 1800 x 800	24" x 71" x 32"
600 x 2000 x 800	24" x 79" x 32"
600 x 2200 x 800	24" x 87" x 32"
800 x 1800 x 800	32" x 71" x 32"
800 x 2000 x 800	32" x 79" x 32"
800 x 2200 x 800	32" x 87" x 32"
1000 x 1800 x 800	40" x 71" x 32"
1000 x 2000 x 800	40" x 79" x 32"
1000 x 2200 x 800	40" x 87" x 32"
1200 x 1800 x 800	47" x 71" x 32"
1200 x 2000 x 800	47" x 79" x 32"
1200 x 2200 x 800	47" x 87" x 32"
1400 x 2000 x 800	55" x 79" x 32"
1600 x 2000 x 800	63" x 79" x 32"

To order an assembled ARETA cabinet

Example: Dimensions W = 800 x H = 2000 x D = 600 with blank front door and screwed rear panel

ARETA-082006PR

ARETA Prefix code _____
 08 The width of the cabinet _____
 20 The height of the cabinet _____
 06 The depth of the cabinet _____
 PR The cabinet composition _____

This stands for the cabinet structure with front door and screwed rear panel.

Or:

PX Cabinet with window door (from W=600 to W=1000)
 DP Cabinet with front and rear blank door.

To order a ready to assemble ARETA cabinet (Shipped as a "Flat Pack")

Example: Cabinet Dimensions W = 800 x H = 2000 x D = 600 with blank front door and screwed rear panel.

ATTF-080060

ATTF Prefix code _____
 080 The width of the cabinet _____
 060 The depth of the cabinet _____

It shows roof and bottom pre-assembled.

ATPO-080200

ATPO Prefix code _____
 080 The width of the cabinet _____
 200 The height of the cabinet _____

It shows the blank door supplied with two uprights with pre-assembled hinges and closing latches.

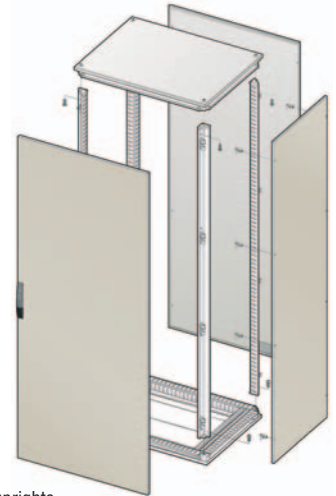
Or:

ATPX Cabinet with a window door

ATRE-080200

ATRE Prefix code _____
 080 The width of the cabinet _____
 200 The height of the cabinet _____

It shows the screwed rear panel supplied with two uprights complete with pre-assembled blocks for fixing screws.



Modular Cabinets

- Areta Modular Cabinets are available with multiple doors or with front window doors and inner panels which are hinged or screwed.
- Linea Modular Cabinets are available with window door and inner panels which are hinged or screwed.
- Cabinets with multiple doors are supplied fully assembled.
- Protection degree: NEMA 12 and IP55 (IP54 with window door)



DIMENSIONS

In mm W x H x D	Approx. inches W x H x D
600 x 1800 x 400	24" x 71" x 16"
600 x 2000 x 400	24" x 79" x 16"
800 x 1800 x 400	32" x 71" x 16"
800 x 2000 x 400	32" x 79" x 16"
600 x 1800 x 500	24" x 71" x 20"
600 x 2000 x 500	24" x 79" x 20"
800 x 1800 x 500	32" x 71" x 20"
800 x 2000 x 500	32" x 79" x 20"
600 x 1800 x 600	24" x 71" x 24"
600 x 2000 x 600	24" x 79" x 24"
800 x 1800 x 600	32" x 71" x 24"
800 x 2000 x 600	32" x 79" x 24"
600 x 1800 x 800	24" x 71" x 32"
600 x 2000 x 800	24" x 79" x 32"
800 x 1800 x 800	32" x 71" x 32"
800 x 2000 x 800	32" x 79" x 32"



linea





linea Suite Cabinets

- For cabinets supplied with a window door, simply replace the suffix PR with PX
- Available with window doors for widths up to 1000mm
- Mounting plate to be ordered separately
- Protection degree: IP55

Accessories

- Inner door: ATPI
- Side panels: LNF1
- 100mm high plinth: LNZ1
- Side inserted mounting plate: ATPL
- Front inserted mounting plate: ATPA (Mounting accessories WTAC-002 to be ordered separately)
- Joining kit: LNKU
- Lifting eyebolts: NEMA12 and WTGS

DIMENSIONS		MODEL NUMBER
In mm W x H x D	Approx. inches W x H x D	
600 x 1800 x 400	24" x 71" x 16"	LINEA061804PR
600 x 2000 x 400	24" x 79" x 16"	LINEA062004PR
800 x 1800 x 400	32" x 71" x 16"	LINEA081804PR
800 x 2000 x 400	32" x 79" x 16"	LINEA082004PR
1000 x 1800 x 400	40" x 71" x 16"	LINEA101804PR
1000 x 2000 x 400	40" x 79" x 16"	LINEA102004PR
1200 x 1800 x 400	48" x 71" x 16"	LINEA121804PR
1200 x 2000 x 400	48" x 79" x 16"	LINEA122004PR
600 x 1800 x 500	24" x 71" x 20"	LINEA061805PR
600 x 2000 x 500	24" x 79" x 20"	LINEA062005PR
800 x 1800 x 500	32" x 71" x 20"	LINEA081805PR
800 x 2000 x 500	32" x 79" x 20"	LINEA082005PR
1000 x 1800 x 500	40" x 71" x 20"	LINEA101805PR
1000 x 2000 x 500	40" x 79" x 20"	LINEA102005PR
1200 x 1800 x 500	48" x 71" x 20"	LINEA121805PR
1200 x 2000 x 500	48" x 79" x 20"	LINEA122005PR
600 x 1800 x 600	24" x 71" x 24"	LINEA061806PR
600 x 2000 x 600	24" x 79" x 24"	LINEA062006PR
800 x 1800 x 600	32" x 71" x 24"	LINEA081806PR
800 x 2000 x 600	32" x 79" x 24"	LINEA082006PR
1000 x 1800 x 600	40" x 71" x 24"	LINEA101806PR
1000 x 2000 x 600	40" x 79" x 24"	LINEA102006PR
1200 x 1800 x 600	48" x 71" x 24"	LINEA121806PR
1200 x 2000 x 600	48" x 79" x 24"	LINEA122006PR

ATB8 Monobloc Cabinets for widths up to 1800mm



- Supplied with front blank door
- Mounting plate to be ordered separately.
- Protection degree: IP55

Accessories:

- Plinth 100mm high – ATZ6
- Front inserted mounting plate – ATPA (to be ordered separately mounting accessories WTAC-002)
- Lifting eyebolts - WTGS

DIMENSIONS		MODEL NUMBER
In mm W x H x D	Approx. inches W x H x D	
1200 x 800 x 400	47" x 32" x 16"	ATB8-120804PR
1200 x 1000 x 400	47" x 40" x 16"	ATB8-121004PR
1400 x 1000 x 400	55" x 40" x 16"	ATB8-141004PR
1600 x 1000 x 400	63" x 40" x 16"	ATB8-161004PR
1800 x 1800 x 400	71" x 40" x 16"	ATB8-181004PR

ATB8 Monobloc Cabinets



- For cabinets supplied with a window door, simply replace the suffix PR with PX
- Available with window doors for widths up to 1000mm
- Mounting plate to be ordered separately
- Protection degree: IP55

Accessories

- 100mm high plinth: ATZ6
- Front inserted mounting plate: ATPA (Mounting accessories WTAC-002 to be ordered separately)
- Lifting eyebolts: WTGS

DIMENSIONS		MODEL NUMBER
In mm W x H x D	Approx. inches W x H x D	
600 x 1200 x 400	24" x 47" x 16"	ATB8-061204PR
600 x 1400 x 400	24" x 55" x 16"	ATB8-061404PR
600 x 1600 x 400	24" x 63" x 16"	ATB8-061604PR
600 x 1800 x 400	24" x 71" x 16"	ATB8-061804PR
600 x 2000 x 400	24" x 79" x 16"	ATB8-062004PR
800 x 1200 x 400	32" x 47" x 16"	ATB8-081204PR
800 x 1400 x 400	32" x 55" x 16"	ATB8-081404PR
800 x 1600 x 400	32" x 63" x 16"	ATB8-081604PR
800 x 1800 x 400	32" x 71" x 16"	ATB8-081804PR
800 x 2000 x 400	32" x 79" x 16"	ATB8-082004PR
1000 x 1800 x 400	39" x 71" x 16"	ATB8-101804PR
1000 x 2000 x 400	39" x 79" x 16"	ATB8-102004PR
1200 x 1200 x 400	47" x 47" x 16"	ATB8-121204PR
1200 x 1400 x 400	24" x 55" x 16"	ATB8-121404PR
1200 x 1600 x 400	47" x 63" x 16"	ATB8-121604PR
1200 x 1800 x 400	47" x 71" x 16"	ATB8-121804PR
1200 x 2000 x 400	47" x 79" x 16"	ATB8-122004PR
1600 x 1800 x 400	63" x 71" x 16"	ATB8-168004PR
1600 x 2000 x 400	63" x 79" x 16"	ATB8-162004PR
600 x 1800 x 500	24" x 71" x 20"	ATB8-061805PR
600 x 2000 x 500	24" x 79" x 20"	ATB8-062005PR
800 x 1800 x 500	32" x 71" x 20"	ATB8-081805PR
800 x 2000 x 500	32" x 79" x 20"	ATB8-082005PR
1000 x 1800 x 500	39" x 71" x 20"	ATB8-101805PR
1000 x 2000 x 500	39" x 79" x 20"	ATB8-102005PR
1200 x 1800 x 500	47" x 71" x 20"	ATB8-121805PR
1200 x 2000 x 500	47" x 79" x 20"	ATB8-122005PR

PC Cabinets With Folding Keyboard Support



- Available as a ready to assemble 'flat pack' or fully assembled
- Protection degree: NEMA 12 and IP55

Accessories:

- Side panels: ATFI
- 100mm high plinth: ATZ1
- Lifting eyebolts: WTGS



DIMENSIONS		MODEL NUMBER
In mm W x H x D	Approx. inches W x H x D	
600 x 1800 x 600	24" x 71" x 24"	ATPC-061806CE
600 x 2000 x 600	24" x 79" x 24"	ATPC-062006CE
600 x 1800 x 800	24" x 71" x 32"	ATPC-061808CE
600 x 2000 x 800	24" x 79" x 32"	ATPC-062008CE

PC on Pedestal PCIN & PCCO



- Two solutions available, PCIN for monitor and keyboard housing, PCCO for monitor, CPU and keyboard housing, supplied with sliding shelf.
- Protection degree: IP55

Monobloc Consoles ZBA



- Mounting plate included
- Protection degree: IP55

DIMENSIONS		MODEL NUMBER
In mm W x H x D	Approx. inches W x H x D	
600 x 1000 x 400	24" x 33" x 16"	ZBA 6-01
800 x 1000 x 400	32" x 33" x 16"	ZBA 8-01
1000 x 1000 x 400	40" x 33" x 16"	ZBA 0-01
1200 x 1000 x 400	47" x 33" x 16"	ZBA 2-01

Monobloc Consoles SBA



- Standard solution with front and rear door
- Mounting plate included
- Protection degree: NEMA 12 and IP55

DIMENSIONS		MODEL NUMBER
In mm W x H x D	Approx. inches W x H x D	
600 x 1000 x 400	24" x 33" x 16"	SBA 6-01
800 x 1000 x 400	32" x 33" x 16"	SBA 8-01
1000 x 1000 x 400	40" x 33" x 16"	SBA 0-01
1200 x 1000 x 400	47" x 33" x 16"	SBA 2-01

ARETA Modular Console Cabinets AL











- AL Console cabinets are the evolution of the ARETA range, offering the same concept of the ARETA PC; a frontal frame mounted on the basic ARETA structure
- Available as a ready to assemble 'flat pack' or fully assembled
- Protection degree: NEMA 12 and IP55

DIMENSIONS		MODEL NUMBER
In mm W x H x D	Approx. inches W x H x D	
600 x 1400 x 400	24" x 55" x 16"	
800 x 1400 x 400	32" x 55" x 16"	
1200 x 1400 x 400	47" x 55" x 16"	
1600 x 1400 x 400	63" x 55" x 16"	
600 x 1400 x 500	24" x 55" x 20"	
800 x 1400 x 500	32" x 55" x 20"	
1200 x 1400 x 500	47" x 55" x 20"	
1600 x 1400 x 500	63" x 55" x 20"	



International Certifications

-  UNI EN ISO 9001:2000 - Italian certification companies of quality systems
-  Underwriters Laboratories Canada and USA
-  Underwriters Laboratories USA
-  Canadian Standards Association of Canada
-  TÜV Rheinland/Berlin-Brandenburg
-  RINA - Registro Italiano Navale
-  Conformity to the LV Directive
-  Conformity to the Directive 94/9/EEC/ATEX

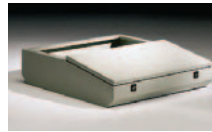
Modular Consoles Box AE



- Mounting plate included
- Protection degree: NEMA 12 and IP55

DIMENSIONS		MODEL NUMBER
In mm W x H x D	Approx. inches W x H x D	
600 x 770 x 400	24" x 30" x 16"	AE 6-01
800 x 770 x 400	32" x 30" x 16"	AE 8-02
1200 x 770 x 400	47" x 30" x 16"	AE 1-23
1600 x 770 x 400	63" x 30" x 16"	AE 1-64
800 x 770 x 500	32" x 30" x 20"	AE 8-025
1200 x 770 x 500	47" x 30" x 20"	AE 1-235
1600 x 770 x 500	63" x 30" x 20"	AE 1-645

Modular Consoles Shelf LE



- Protection degree: NEMA 12 and IP55

DIMENSIONS		MODEL NUMBER
In mm W x H x D	Approx. inches W x H x D	
600 x 200 x 400	24" x 8" x 16"	LE 6-01
800 x 200 x 400	32" x 8" x 16"	LE 8-02
1200 x 200 x 400	47" x 8" x 16"	LE 1-23
1600 x 200 x 400	63" x 8" x 16"	LE 1-64
800 x 200 x 500	32" x 8" x 20"	LE 8-025
1200 x 200 x 500	47" x 8" x 20"	LE 1-235
1600 x 200 x 500	63" x 8" x 20"	LE 1-645

Modular Consoles Upper Part PE



- Mounting plate included
- Protection degree: NEMA 12 and IP55

DIMENSIONS		MODEL NUMBER
In mm W x H x D	Approx. inches W x H x D	
600 x 460 x 400	24" x 18" x 16"	PE 6-01
800 x 460 x 400	32" x 18" x 16"	PE 8-02
1200 x 460 x 400	47" x 18" x 16"	PE 1-23
1600 x 460 x 400	63" x 18" x 16"	PE 1-64
800 x 460 x 500	32" x 18" x 20"	PE 8-025
1200 x 460 x 500	47" x 18" x 20"	PE 1-235
1600 x 460 x 500	63" x 18" x 20"	PE 1-645

Modular Consoles Upper Part ME



- Protection degree: NEMA 12 and IP55

DIMENSIONS		MODEL NUMBER
In mm W x H x D	Approx. inches W x H x D	
600 x 252 x 400	24" x 10" x 16"	ME 6-01
800 x 252 x 400	32" x 10" x 16"	ME 8-02
1200 x 252 x 400	47" x 10" x 16"	ME 1-23
1600 x 252 x 400	63" x 10" x 16"	ME 1-64
800 x 272 x 500	32" x 11" x 20"	ME 8-025
1200 x 272 x 500	47" x 11" x 20"	ME 1-235
1600 x 272 x 500	63" x 11" x 20"	ME 1-645

ARETA Stainless Steel Suite Cabinets



- Stainless steel cabinets are for use in both corrosive and food processing environments. ARETA has been manufactured in stainless steel by keeping the same concept of the cabinet offered in mild steel.
 - 304 grade stainless steel (316 on request).
 - Available with blank (PR) or transparent (PX) front door.
 - Mounting plate to be ordered separately.
 - Protection degree: IP55.
- To order a stainless steel enclosure in high grade AISI 316, please add "H" to the part number (e.g. ARETX-081804PRH)

Accessories:

- Front inserted mounting plate – ATPA (to be ordered separately mounting accessories WTKB-002)
- Side panels - ATEX • Plinth 100mm high - ATX1
- Joining kit – ATKU • Lifting eyebolts - WTGS

ARETA Modular In Stainless Steel



- AVAILABLE ON REQUEST FULLY ASSEMBLED WITH INNER PANELS AND FRONT PLEXI DOOR.
- 304 grade stainless steel (316 on request).
- Inner cubicles in galvanised sheet steel
- Protection degree: IP54
- To order a stainless steel enclosure in high grade AISI 316, please add "H" to the part number (e.g. ARETX-081804PRH)

Accessories:

- Side panels - ATEX • Plinth 100mm high - ATX1
- Joining kit – ATKU • Lifting eyebolts - WTGS

ARETA PC In Stainless Steel with Pull-out Keyboard



- AVAILABLE ONLY FULLY ASSEMBLED
- 304 grade stainless steel (316 on request).
- Supply includes top glazed door for monitor viewing, pull-out keyboard drawer with mouse support, lower door, rear door, monitor support.
- Protection degree: IP55
- To order a stainless steel enclosure in high grade AISI 316, please add "H" to the part number (e.g. ATPCX-061806CEH)

Accessories:

- Side panels - ATEX • Plinth 100mm high - ATX1
- Joining kit – ATKU • Lifting eyebolts - WTGS

ATB8 Stainless Steel Monobloc Cabinets



- Fully welded structure, same technical features of the cabinet offered in mild steel.
- Removable rear panel
- 304 grade stainless steel (316 on request).
- Mounting plate to be ordered separately.
- Protection degree: IP55.

Accessories:

- Front inserted mounting plate – ATPA (to be ordered separately mounting accessories WTAC-002)
- Plinth 100mm high – ATX6
- Lifting eyebolts - WTGS



STX/STPX Stainless Steel Boxes



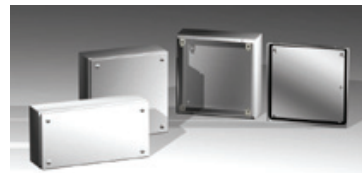
- Stainless steel boxes are manufactured using the same construction and productive concept of the ST – STP mild steel range.
- Available with blank or transparent door.
- 304 grade stainless steel (316 on request).
- Supply includes mounting plate.
- Protection degree: IP65 for boxes with blank door. IP55 for boxes with plexi door



To order a stainless steel box in high grade AISI 316, please add "H" to the part number (e.g. STX2-315H)



SDX Stainless Steel Terminal Boxes



- 304 grade stainless steel (316 on request).
- Mounting plate to be ordered separately.
- Protection degree: IP55.

ZBX Stainless Steel Monobloc Control Desks

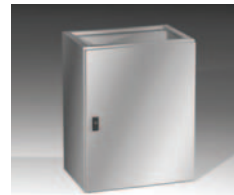


- Supply includes mounting plate.
- 304 grade stainless steel (316 on request).
- Protection degree: IP55.

Accessories:

- Plinth 100mm high – ZCX4

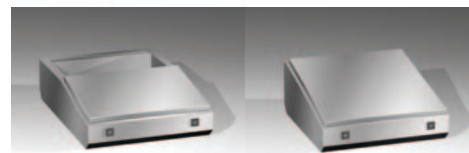
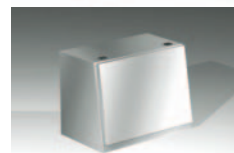
AEX- LEX-PEX-MEX Stainless Steel Modular Control Desks



- Stainless steel modular control desks are manufactured using the same construction and productive concept of the mild steel range.
- 304 grade stainless steel (316 on request).
- Supply includes mounting plate.
- Protection degree: IP55.

Accessories:

- Plinth 100mm high – ZCX4
- Cover TLX



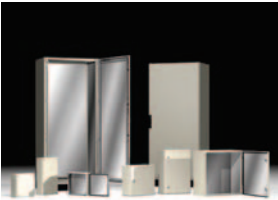
Bioniq Suspension Arm System for Operator Interface Panels



New "BIONIQ" suspension arm and Control panel system provides greater operator flexibility and accessibility for Operator Interface systems that need to be suspended from a machine tool or other process control applications. Key features of this innovative product line include:

- Light-weight extruded aluminum tube
- Contemporary design with an eye-catching color contrast
- Versatile movement of the arm system provides an ideal viewing angle for the operator
- Operator housing BQC and keyboard housing BQK are customized according to customer requirements
- Suspension arm BQPA with different solutions allowing mounting from the top or the side of the enclosure.
- Application on pedestal available on request
- Economic solution BST available on request
- Protection degree: IP55

EMC Solutions



The growing electromagnetic pollution and international standards require electro-magnetic shielding. The European EMC 89/336 directive affects electric and electronic equipment, which can create or be subject to electromagnetic disturbances. In order to meet the directive and offer an effective solution, a specific ARETA cabinet has been designed for EMC applications.

Thermal Management



A wide range of products are offered. Compact as well as ultra-thin conditioners, air-water heat exchangers, heaters and control devices (thermostats and hygrostats) and filter fans of top class design.

Customization

We understand that offering standard "off the shelf" enclosures is not always sufficient to meet customer requirements. Our advanced manufacturing systems and dedicated engineering allows us to adapt our standard products to include various modifications.



Software



"Quadroplan" software is a valid aid for designers and board manufacturers, since it enables the user to perform a correct dimensioning of the board enclosure, to overtemperature purposes, inspection of the dynamic stresses of busbars and short circuit withstand, in compliance with the standards.

"ETA CAD" features, included in this software, allow the positioning of holes and cut-outs to our standard products directly from the customer's PC. Information is then transferred over the internet directly to our factory floor.