

Overview

Unlike the limit switch range, the **cable switches**, have a ring activation system to which the traction cable is applied. The cable is connected to the ring with special accessories and held at the right tension to ensure that the contacts can be closed. Any manual operation or the breakage of the cable will open the NC contact and break the system power supply circuit.

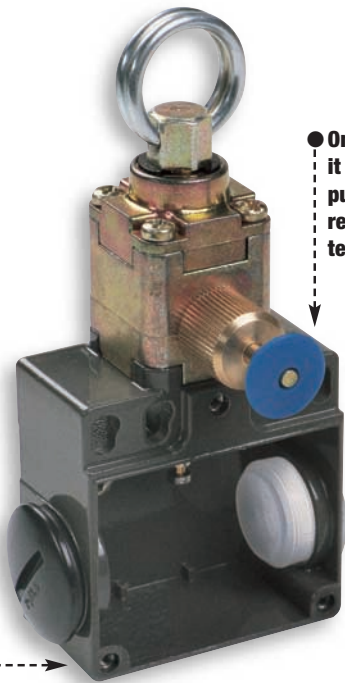
- The process described refers to the emergency stop devices in accordance with the **EN 418** standards.

- The versions available range from the E102 to the E402 series in thermoplastic or metal with or without a mechanical reset lock.

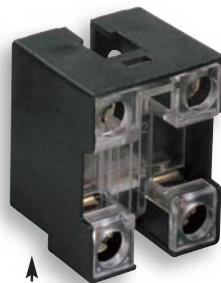
- **Free cable length up to 6 meters, or greater with special extensions every 3 meters.**

The cable connection and tension and the extensions should be applied with maximum attention to safety, with the suitable accessories.

B



- **Once the NC contact has been opened, it is returned to its normal state by pulling the blue reset control and returning the cable to its maximum tension.**



- Contact element available with slow action 1NO + 1NC; **Apply the limit switch with the cable taut to close both the 2NC contacts.**



- PA6 thermoplastic version, reinforced with V2 self-extinguishing class glass fibre. Diecast metal version, painted with oven baked epoxy powder, colour RAL 7022. The same features are present in all the cable appliance series.

- Cable safety switches are essential for the continuous control of a long line of machines or parts extending over a considerable length. They guarantee the safety of the operator, who is able to control the immediate stoppage of the machinery from any point in the operating zone with few automated systems by cutting off the power supply.

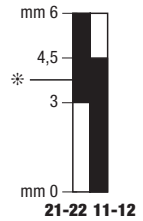
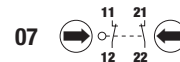
Dual insulation plastic

E102 - with EN418 rearm



Code	Model	Description	Type	Travel diagram	Weight
EN809720	E102 07 TBI	1NO+1NC Slow action			0,175

* Stretch the cable until the contacts (2NC) close



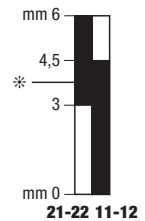
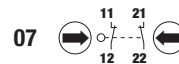
B

E402 - with EN418 rearm



Code	Model	Description	Type	Travel diagram	Weight
EN809770	E402 07 TBI	1NO+1NC Slow action			

* Stretch the cable until the contacts (2NC) close



- Accessories page **B21**
- Technical information page **B4**
- Dimensions page **B23**
- Operating features page **B5**
- Approval and certification page **D8**

Accessories

Code	Model	Description
------	-------	-------------



ER844600	M05	Clamp for 5 mm dia. cable
----------	------------	---------------------------



ER844610	R05	A-shaped hook for 5 mm dia. cable
----------	------------	-----------------------------------

B



ER844620	T05	M6x60 tensioner
----------	------------	-----------------



ER844630	005	M8 eyelet with thread
----------	------------	-----------------------



ER844640	F05	5 mm dia. red steel cable
----------	------------	---------------------------

Operating characteristics

Switches controlled by a traction cable are safety elements that break the power supply circuit of the process system to activate the emergency stop devices in accordance with the **EN418 standard**.
 In the **E102 - E402 series**, the switch is **applied when the cable is taut**, to guarantee the **closure of both contacts**.
 When the emergency stop cable is pulled, **the reset lock will be activated. Pull the blue reset button to reset.**

B

